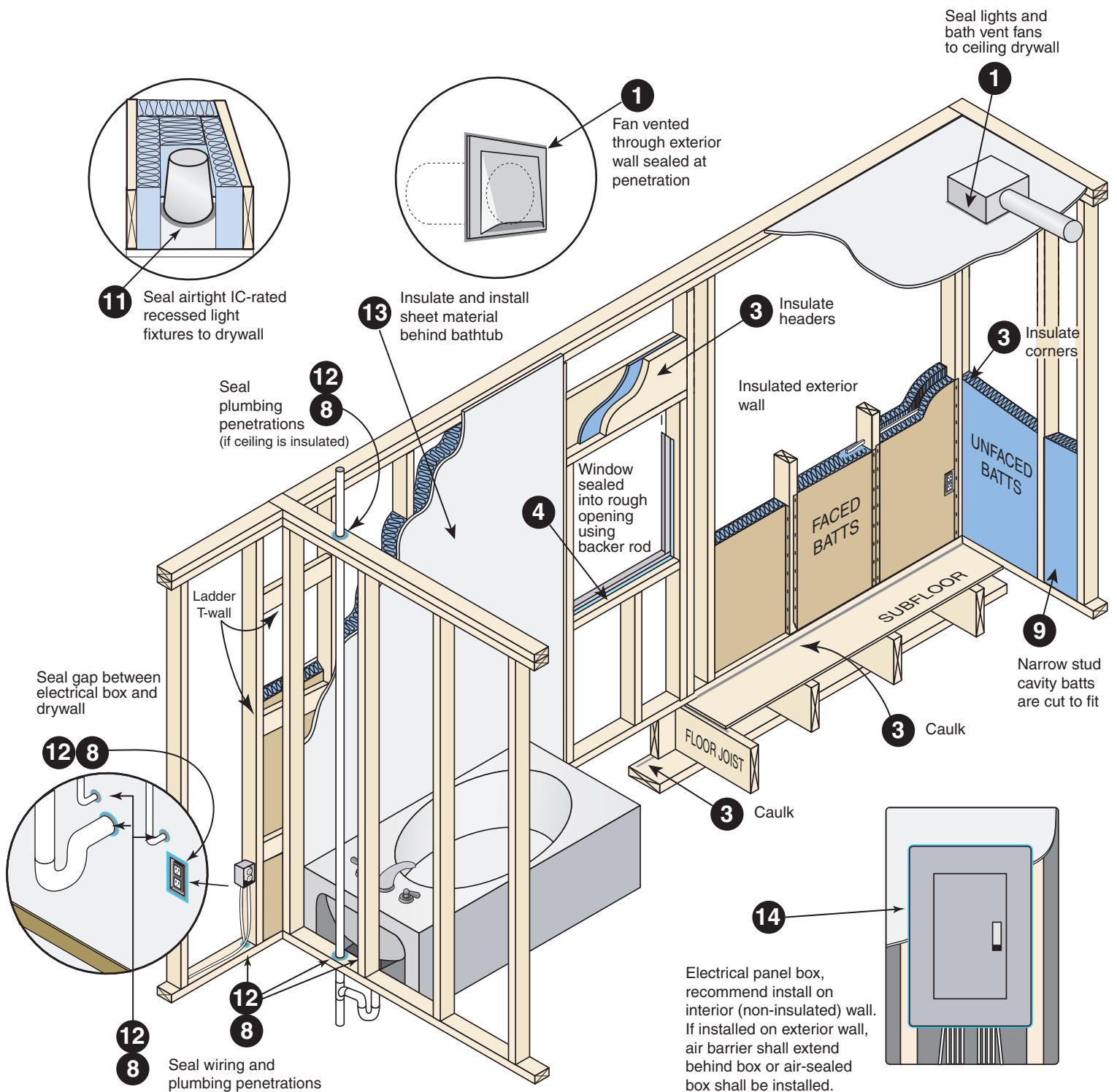


**Table 402.4.2**  
**Air Barrier and Insulation Inspection Component Criteria**

NUMBER	COMPONENT	CRITERIA
1	Air barrier and thermal barrier	Exterior thermal envelope insulation for framed walls is installed in substantial contact and continuous alignment with building envelope air barrier. Breaks or joints in the air barrier are filled or repaired. Air-permeable insulation is not used as a sealing material. Air-permeable insulation is inside of an air barrier.
2	Ceiling/attic	Air barrier in any dropped ceiling/soffit is substantially aligned with insulation and any gaps are sealed. Attic access (except unvented attic), knee wall door, or drop down stair is sealed.
3	Walls	Corners and headers are insulated. Junction of foundation and sill plate is sealed.
4	Windows and doors	Space between window/door jambs and framing is sealed.
5	Rim joists	Rim joists are insulated and include an air barrier.
6	Floors (including above-garage and cantilevered floors)	Insulation is installed to maintain permanent contact with underside of subfloor decking. Air barrier is installed at any exposed edge of insulation.
7	Crawl space walls	Insulation is permanently attached to walls. Exposed earth in unvented crawl spaces is covered with Class I vapor retarder with overlapping joints taped.
8	Shafts, penetrations	Duct shafts, utility penetrations, knee walls and flue shafts opening to exterior or unconditioned space are sealed.
9	Narrow cavities	Batts in narrow cavities are cut to fit, or narrow cavities are filled by sprayed/blown insulation.
10	Garage separation	Air sealing is provided between the garage and conditioned spaces.
11	Recessed lighting	Recessed light fixtures are air tight, IC rated, and sealed to drywall. Exception—fixtures in conditioned space.
12	Plumbing and wiring	Insulation is placed between outside and pipes. Batt insulation is cut to fit around wiring and plumbing, or sprayed/blown insulation extends behind piping and wiring.
13	Shower/tub on exterior wall	Showers and tubs on exterior walls have insulation and an air barrier separating them from the exterior wall.
14	Electrical/phone box on exterior walls	Air barrier extends behind boxes or air sealed-type boxes are installed.
15	Common wall	Air barrier is installed in common wall between dwelling units.
16	HVAC register boots	HVAC register boots that penetrate building envelope are sealed to subfloor or drywall.
17	Fireplace	Fireplace walls include an air barrier.

Disclaimer:  
This document is intended solely to help graphically demonstrate the air leakage provisions of section 402.4 of the 2009 IECC. It does not cover all airsealing locations or techniques. Other code provisions may be applicable as well.

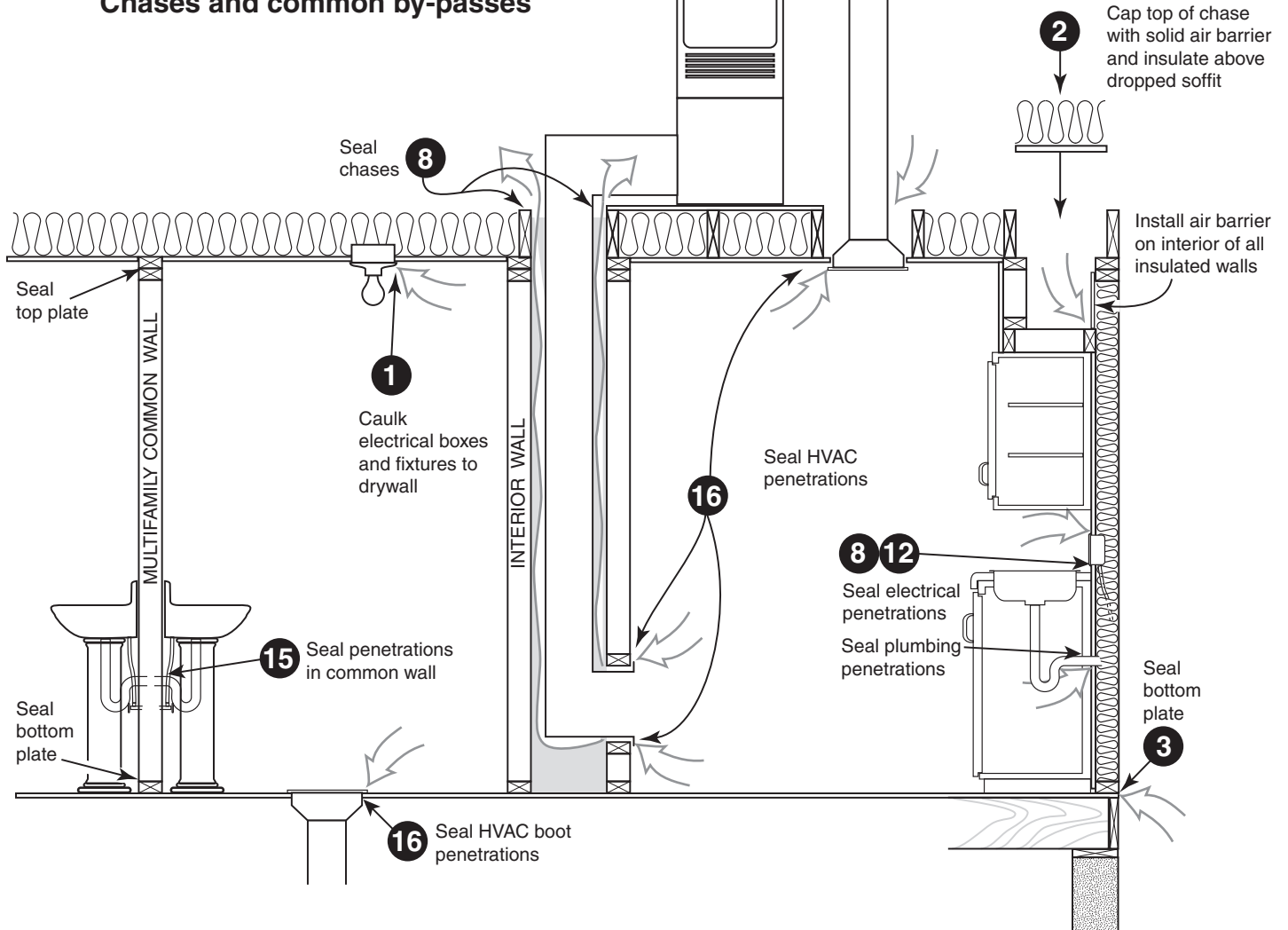
# Air sealing key points



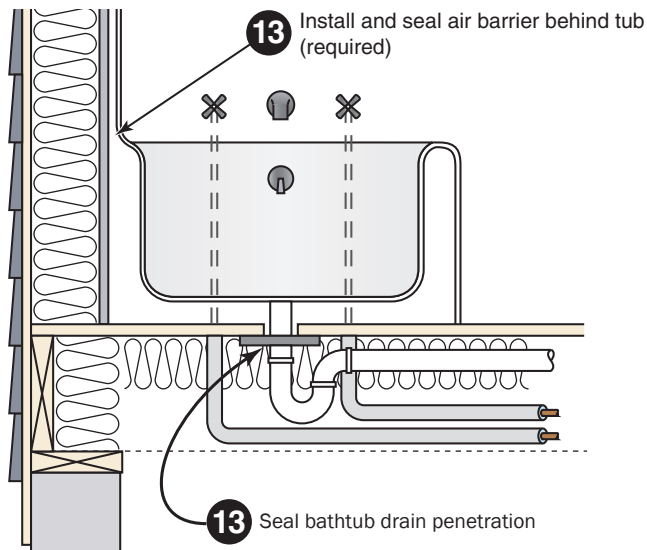
Disclaimer:  
This document is intended solely to help graphically demonstrate the air leakage provisions of section 402.4 of the 2009 IECC. It does not cover all airsealing locations or techniques. Other code provisions may be applicable as well.

# Air sealing key points *continued*

## Chases and common by-passes

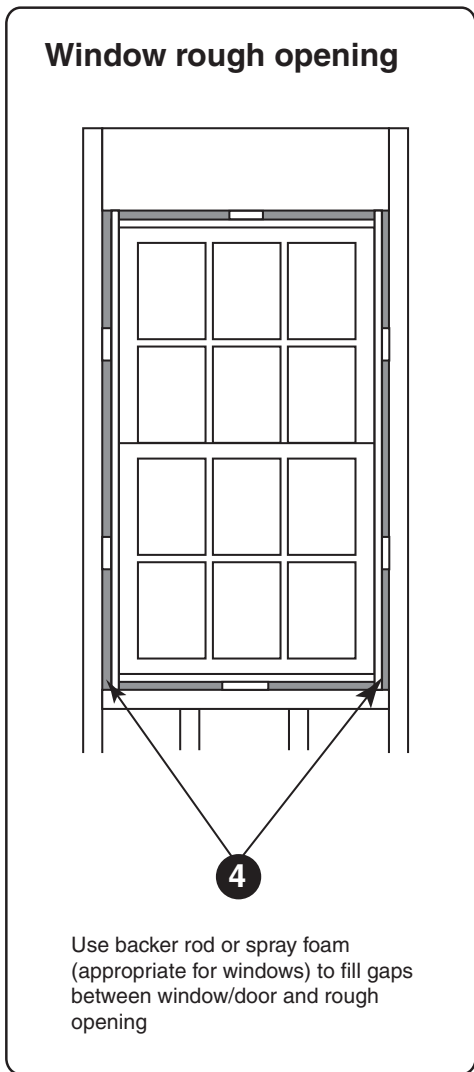


## Shower/tub drain rough opening

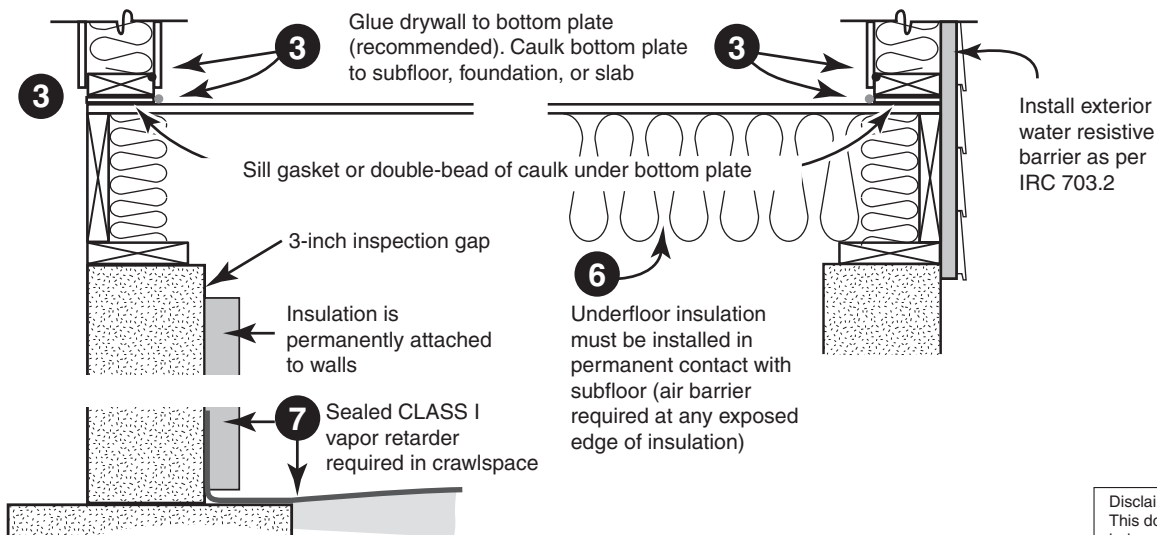
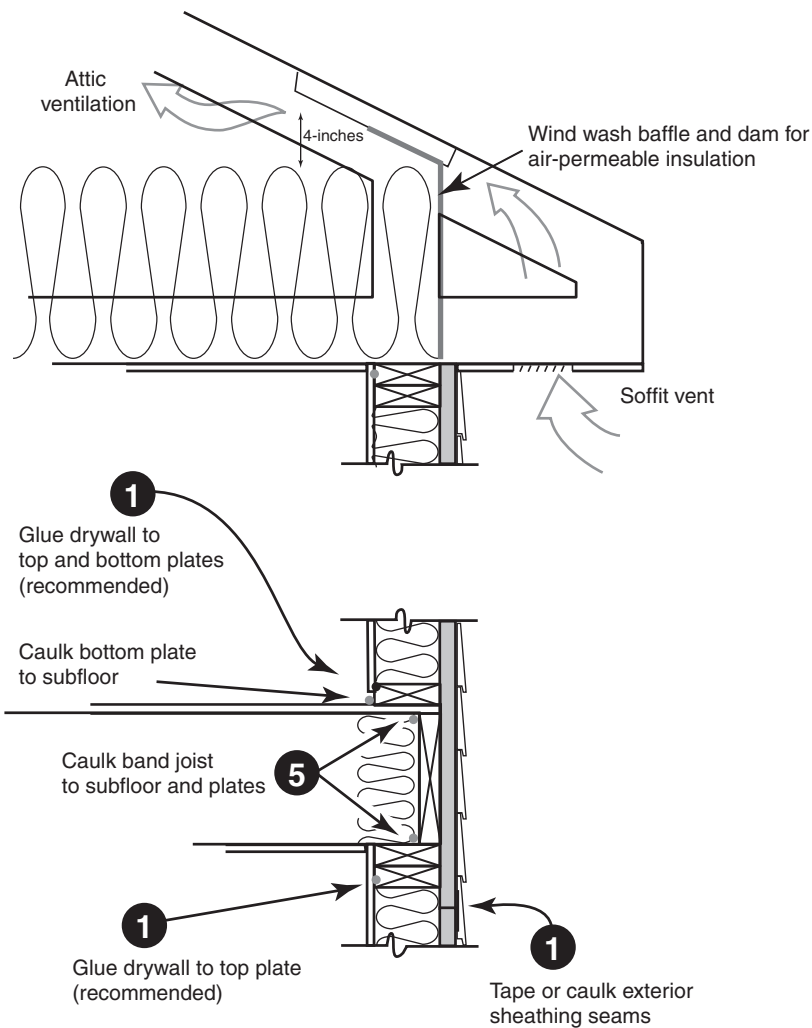


Disclaimer:  
This document is intended solely to help graphically demonstrate the air leakage provisions of section 402.4 of the 2009 IECC. It does not cover all airsealing locations or techniques. Other code provisions may be applicable as well.

# Air sealing key points *continued*



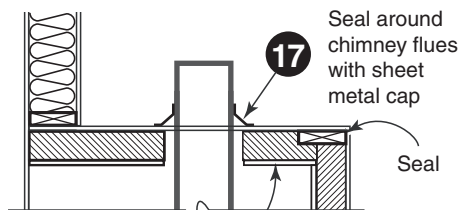
### Wall cross-section



**Disclaimer:**  
This document is intended solely to help graphically demonstrate the air leakage provisions of section 402.4 of the 2009 IECC. It does not cover all airsealing locations or techniques. Other code provisions may be applicable as well.

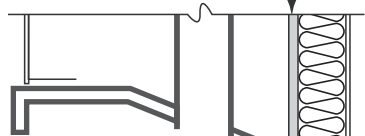
# Air sealing key points *continued*

## Combustion chase penetrations



Rigid foam option  
(recommend covering with ignition barrier for fire protection)

Internal air barrier (recommended)



Blocking above supporting wall for cantilevered floor (required)

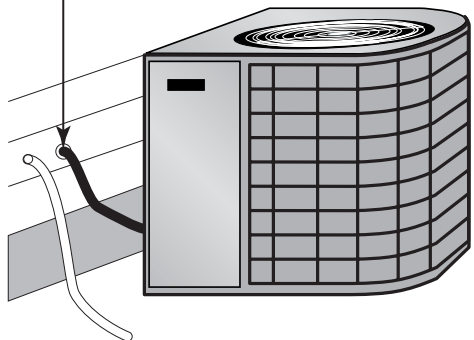
Insulation above top plate of supporting wall

Underfloor insulation must be installed in permanent contact with subfloor (air barrier required at any exposed edge of insulation)

6

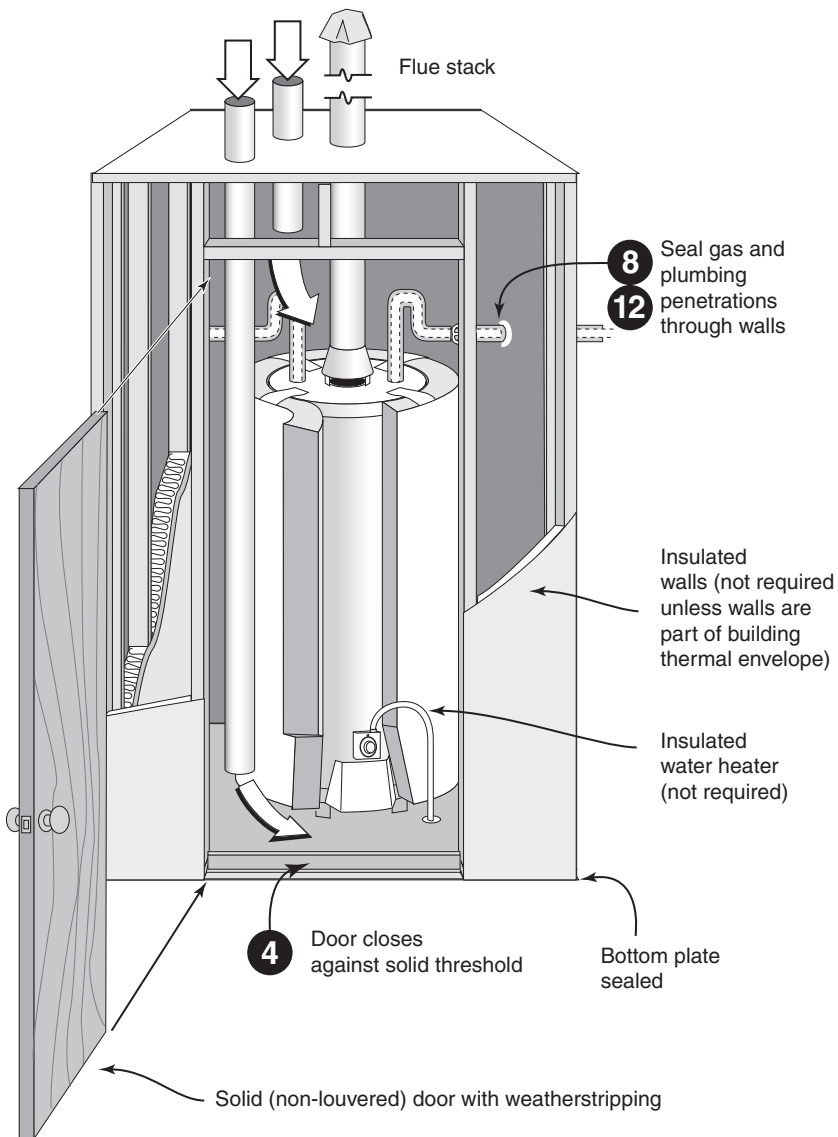
## Exterior penetrations

8 12 Caulk exterior wall penetrations for refrigeration lines, condensate line, etc.



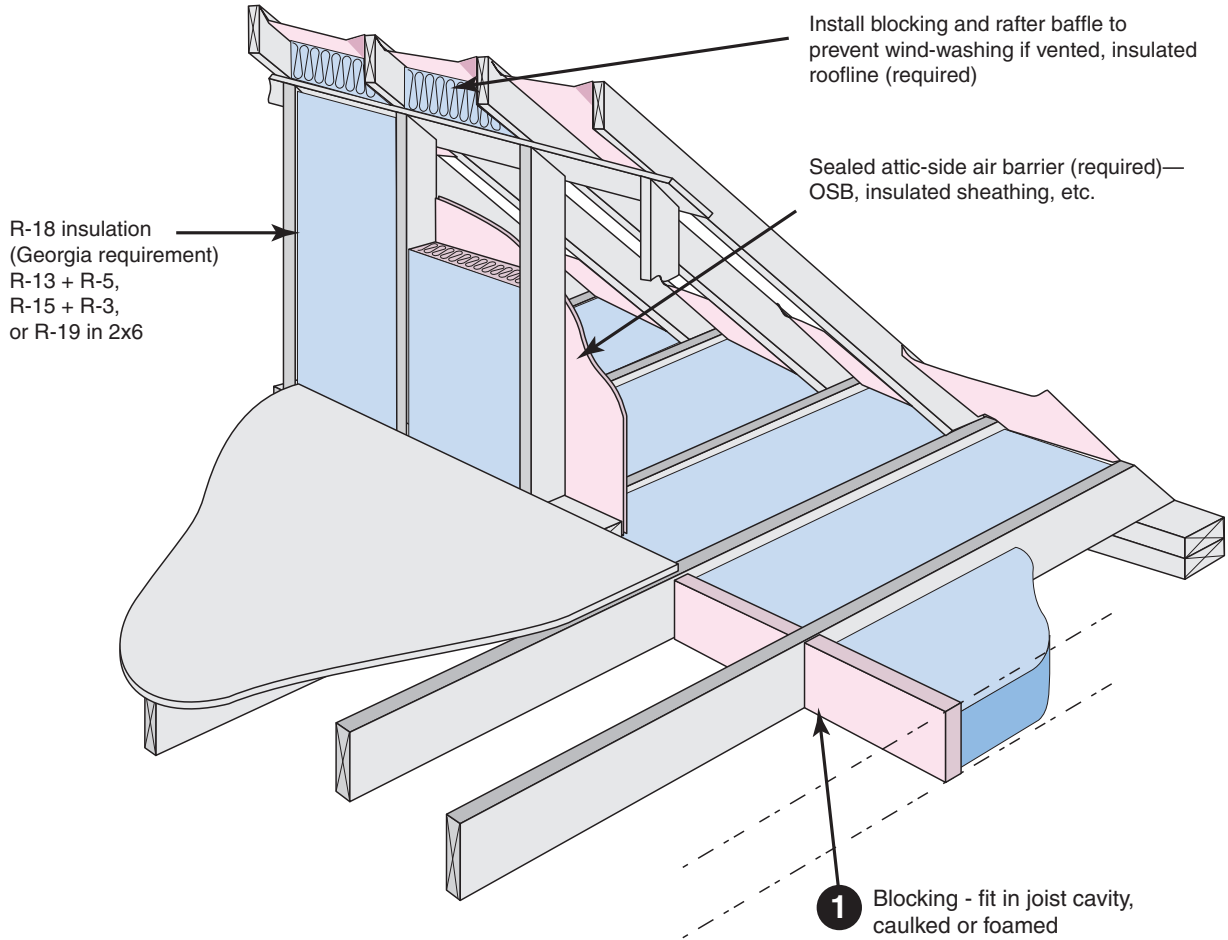
## Combustion closet

Combustion air inlets  
as per mechanical and/or fuel gas code

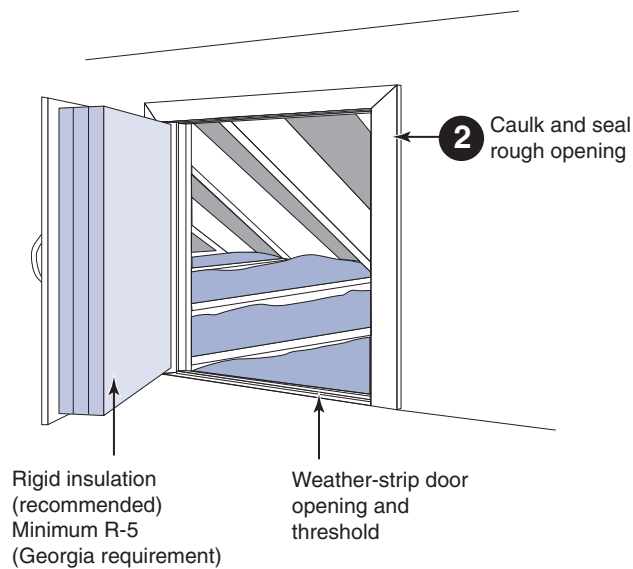


Disclaimer:  
This document is intended solely to help graphically demonstrate the air leakage provisions of section 402.4 of the 2009 IECC. It does not cover all airsealing locations or techniques. Other code provisions may be applicable as well.

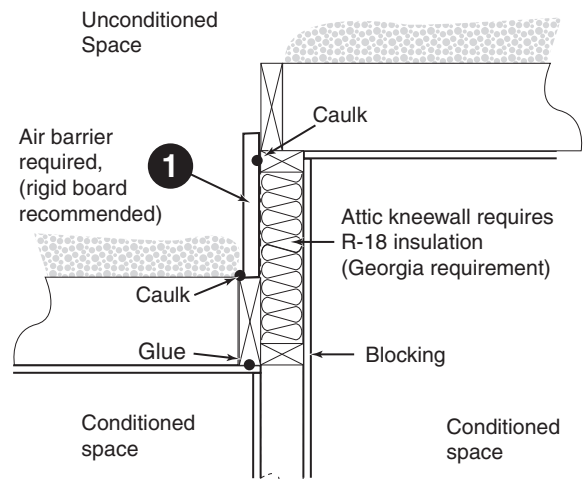
# Air sealing key points *continued*



## Attic knee-walls



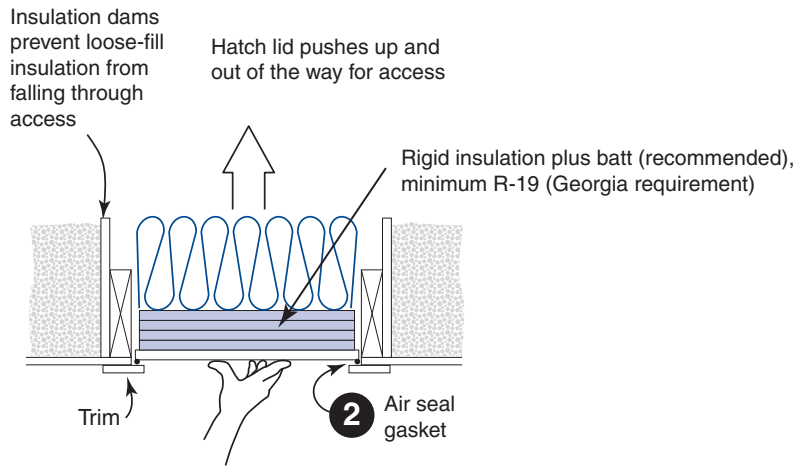
## Two-level attic



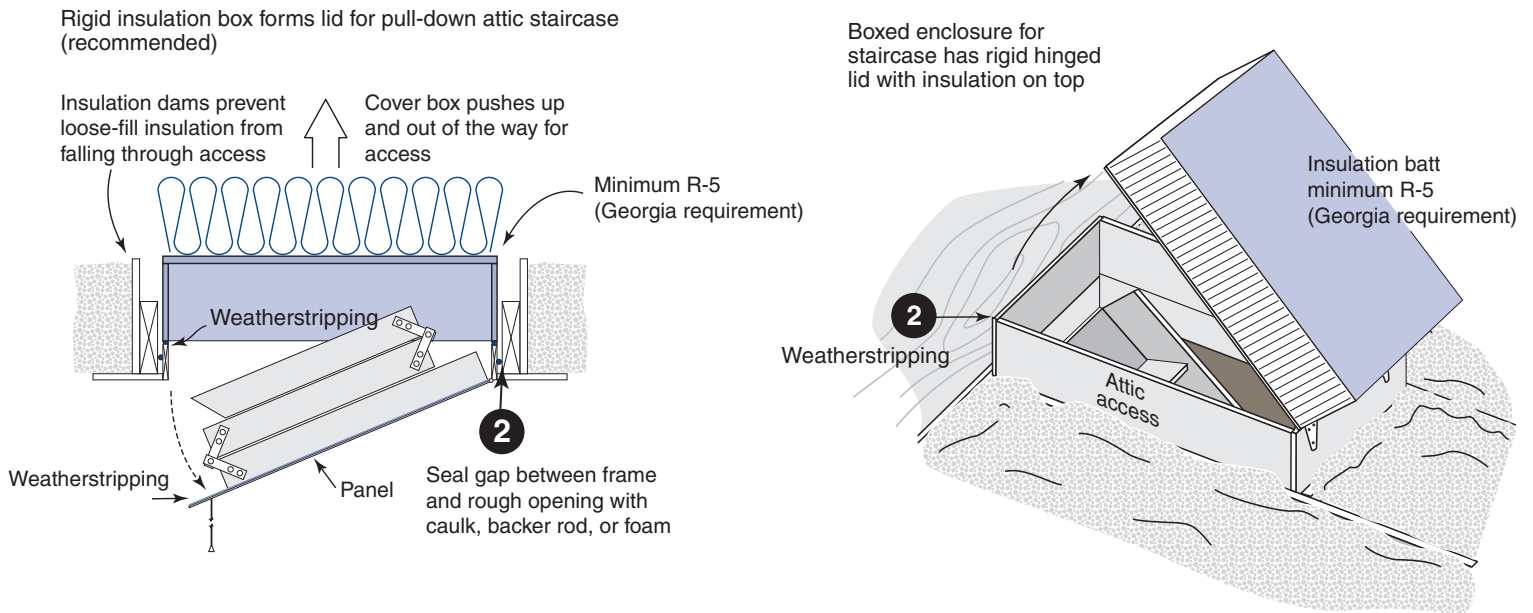
Disclaimer:  
This document is intended solely to help graphically demonstrate the air leakage provisions of section 402.4 of the 2009 IECC. It does not cover all airsealing locations or techniques. Other code provisions may be applicable as well.

# Air sealing key points *continued*

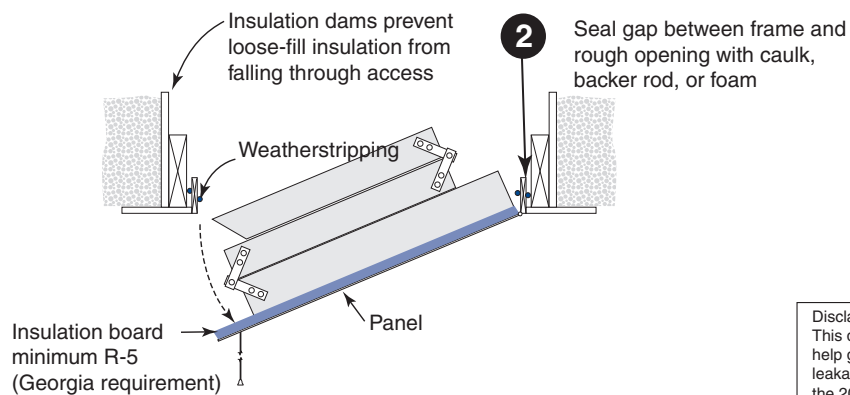
## Attic scuttle



## Attic pull-down stairs

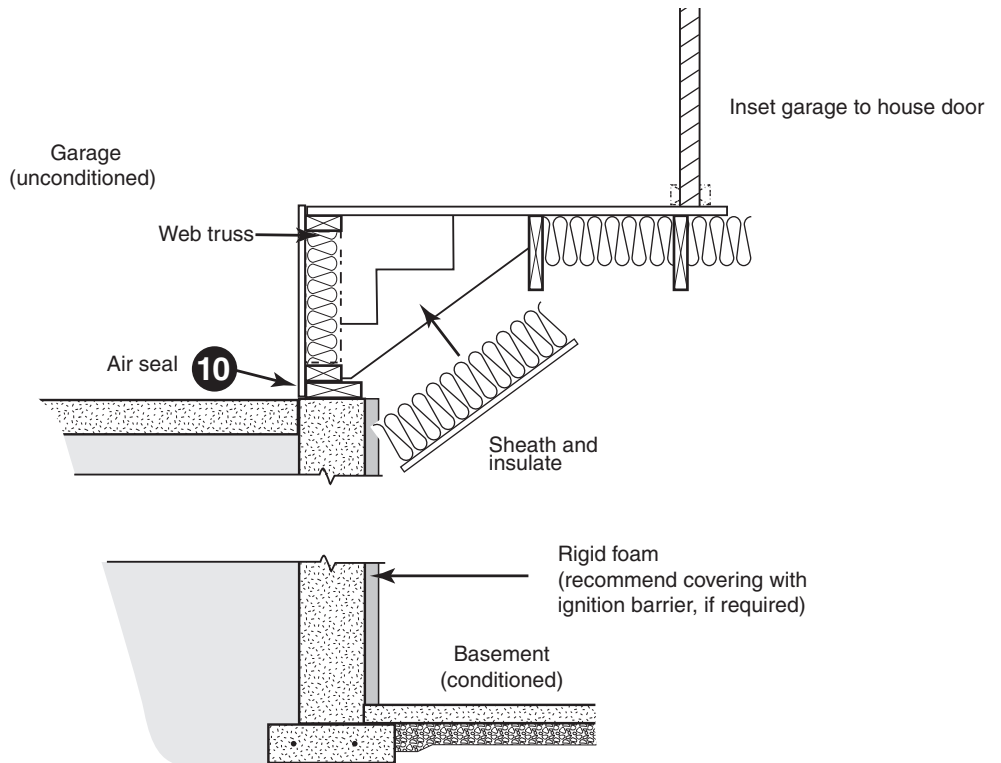
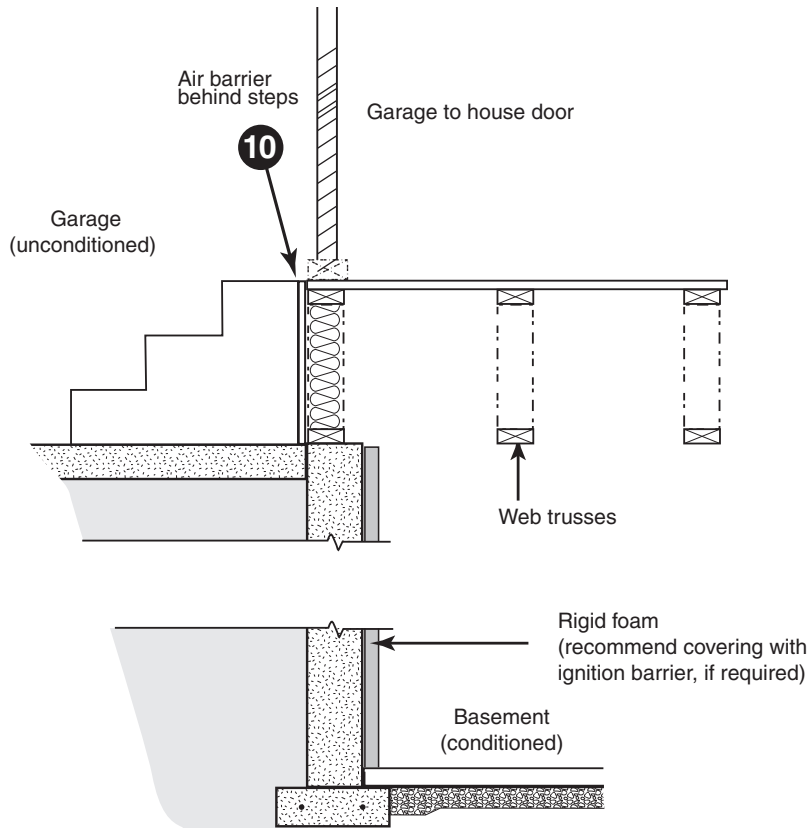


## Attic pull-down stairs



Disclaimer:  
This document is intended solely to help graphically demonstrate the air leakage provisions of section 402.4 of the 2009 IECC. It does not cover all airsealing locations or techniques. Other code provisions may be applicable as well.

# Air sealing key points *continued*



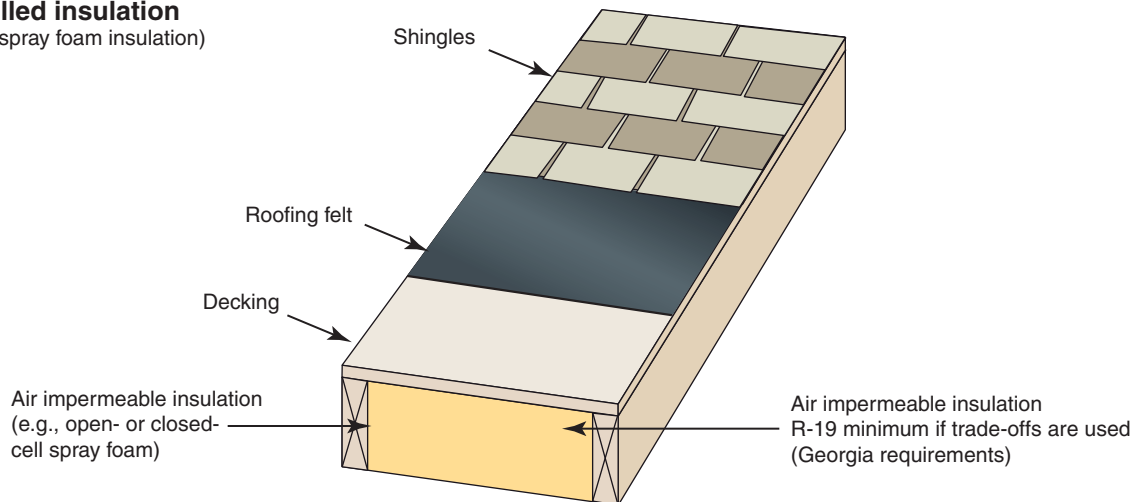
Disclaimer:  
This document is intended solely to help graphically demonstrate the air leakage provisions of section 402.4 of the 2009 IECC. It does not cover all airsealing locations or techniques. Other code provisions may be applicable as well.



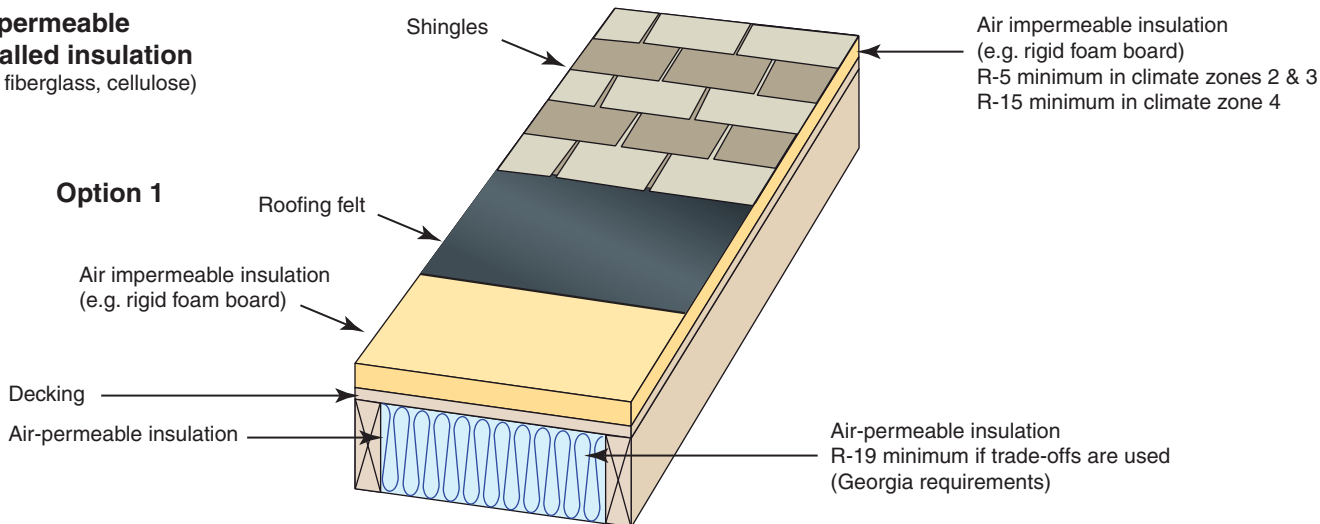
# Roofline Installed Insulation Options

Reference Table 402.6 in Georgia amendments to the 2009 IECC and section 806.4 in the Georgia amendments to the 2006 IECC

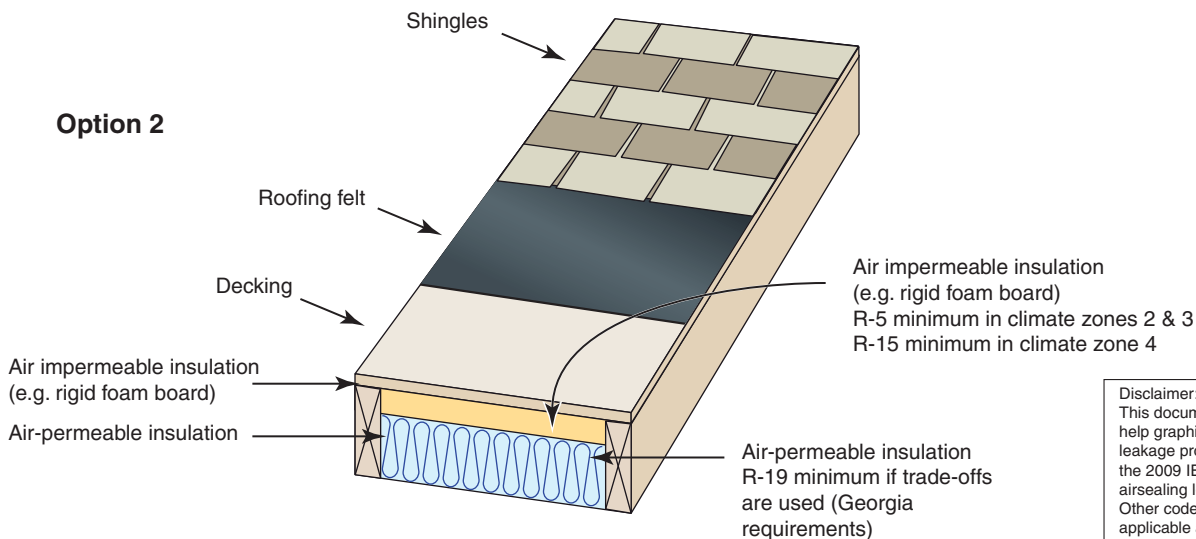
## Air impermeable installed insulation (e.g., spray foam insulation)



## Air-permeable installed insulation (e.g. fiberglass, cellulose)



## Option 2



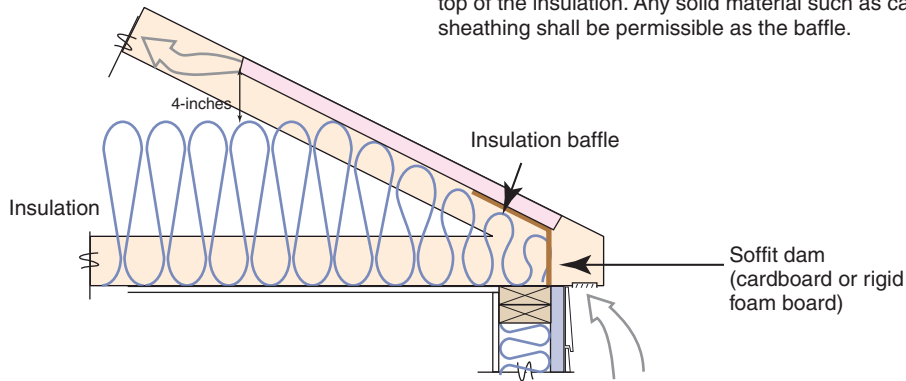
Disclaimer:  
This document is intended solely to help graphically demonstrate the air leakage provisions of section 402.4 of the 2009 IECC. It does not cover all airsealing locations or techniques. Other code provisions may be applicable as well.

# Ceiling Insulation Details

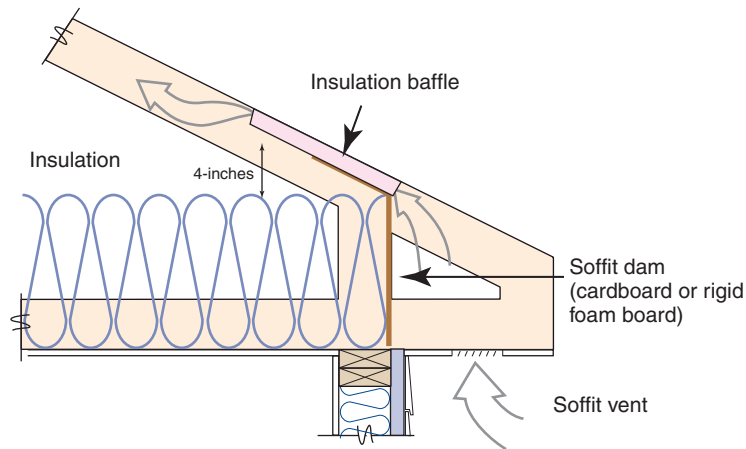
## Rafter and Truss

**Note: Wind wash baffle and air-permeable insulation dam.** For air permeable insulation in vented attics, baffles shall be installed adjacent to soffit and eave vents. A minimum of a 1-inch of space shall be provided between the insulation and the roof sheathing and at the location of the vent. The baffle shall extend over the top of the insulation inward until it is at least 4 inches vertically above the top of the insulation. Any solid material such as cardboard or thin insulating sheathing shall be permissible as the baffle.

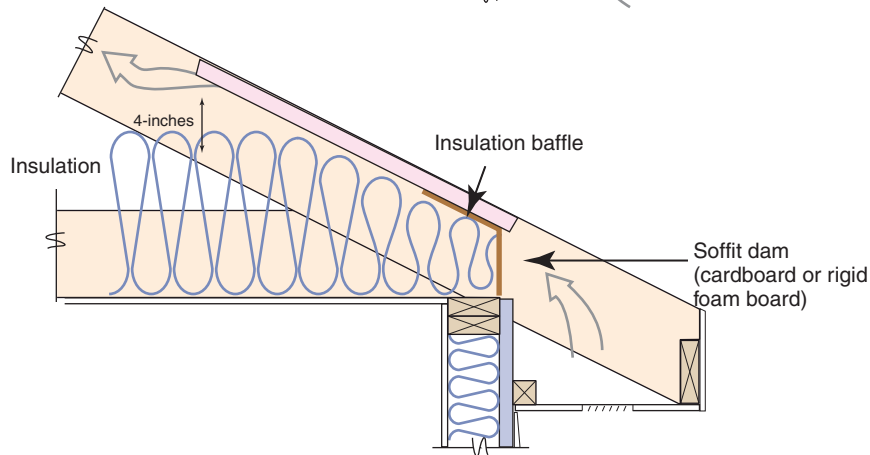
**Standard Truss**  
with tapered  
insulation depth



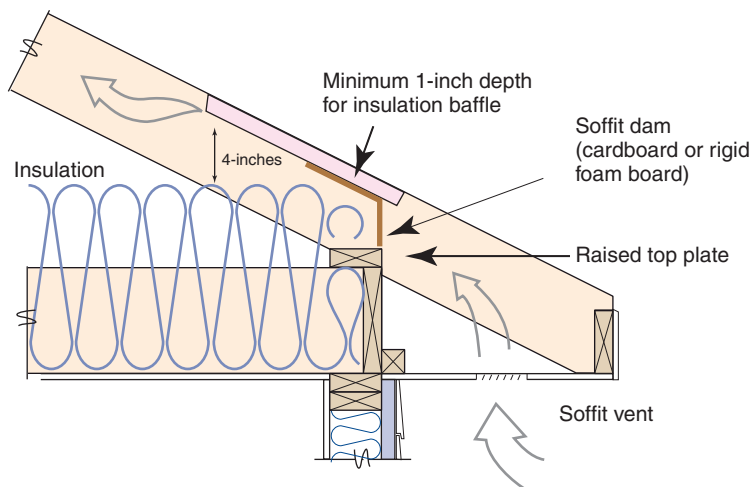
**Energy Truss**  
with full height insulation  
(recommended)



**Standard rafter and top plate**  
with tapered insulation depth



**Rafter on raised top plate**  
with full height insulation  
(recommended)



**Disclaimer:**  
This document is intended solely to help graphically demonstrate the air leakage provisions of section 402.4 of the 2009 IECC. It does not cover all airsealing locations or techniques. Other code provisions may be applicable as well.